

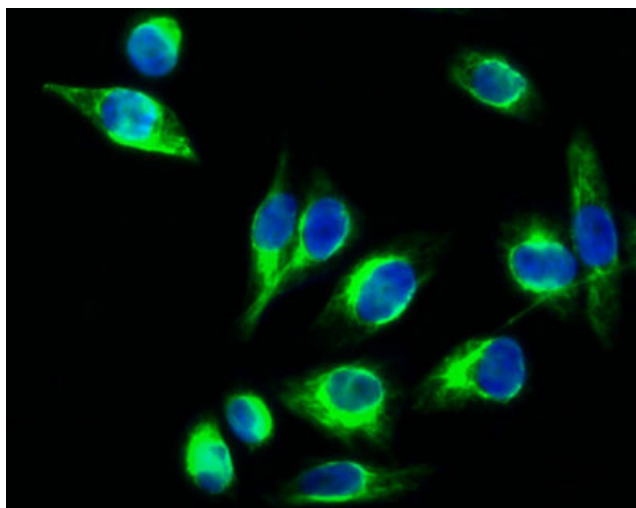


Luciferase mouse Monoclonal Antibody(6B8)

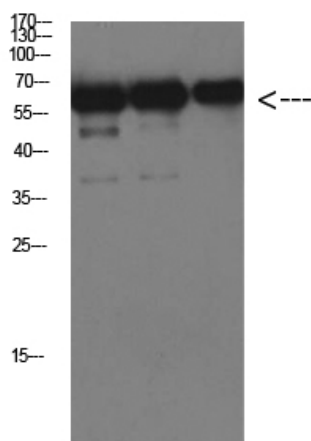
Catalog No	YP-Ab-04846
Isotype	IgG
Reactivity	Firefly
Applications	IF;WB;
Gene Name	
Protein Name	Luciferase
Immunogen	Recombinant Protein of Luciferase of Luciferase
Specificity	Luciferase protein detects endogenous levels of Luciferase
Formulation	Liquid in PBS containing 50% glycerol, 0.5% BSA and 0.02% sodium azide.
Source	Monoclonal, Mouse
Purification	The antibody was affinity-purified from mouse ascites by affinity-chromatography using specific immunogen.
Dilution	IF: 1:50-200 WB 1:1000-2000
Concentration	1 mg/ml
Purity	≥90%
Storage Stability	-20°C/1 year
Synonyms	
Observed Band	60kD
Cell Pathway	
Tissue Specificity	
Function	bioluminescence, oxidation reduction,
Background	Luciferase from the firefly has become one of the more widely used reporter proteins for the study of gene expression. Luciferase catalyzes a bioluminescent reaction which requires the substrate luciferin as well as Mg ²⁺ and ATP. Mixing these reagents with the cell extract containing luciferase, results in a flash of light that decays rapidly. This light can be detected by a luminometer. The total light emission is proportional to the luciferase activity of the sample.
matters needing attention	Avoid repeated freezing and thawing!
Usage suggestions	This product can be used in immunological reaction related experiments. For more information, please consult technical personnel.



Products Images



Immunofluorescence analysis of HEK293T cells transfected with Luciferase . 1, Luciferase Mouse Monoclonal Antibody(6B8)(green) was diluted at 1:200(4°C, overnight). 2, Dylight 488 labeled Secondary antibody was diluted at 1:300 room temperature, 30min(Immunoway RS23210). DAPI(blue) 10min.



Western Blot analysis of over-expressed Luciferase protein using antibody diluted at 1:1000